

MINAMI

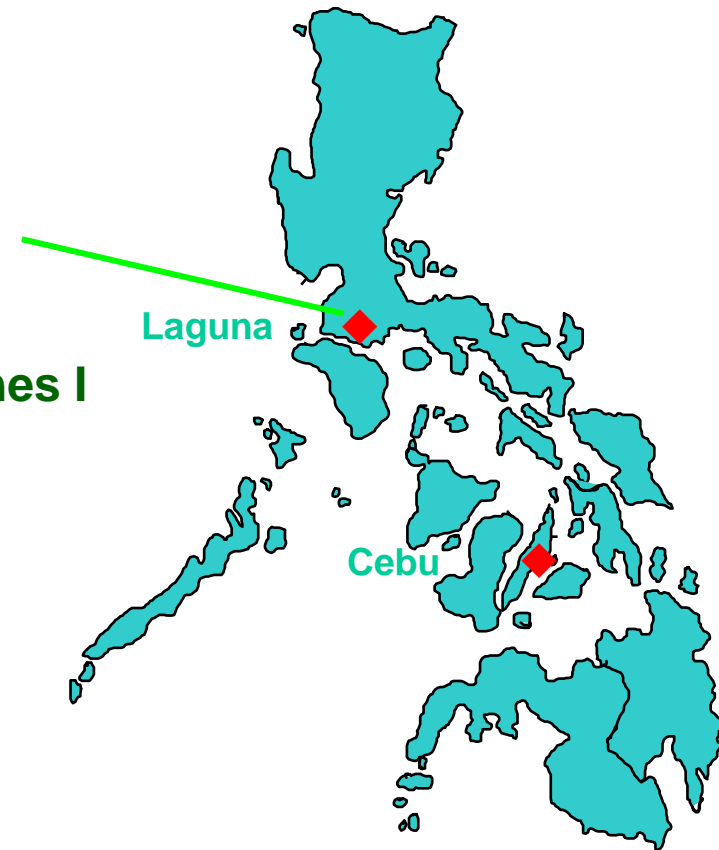
Machinery and Electronics
Technologies Inc.

Company Profile



MME TECHNOLOGIES, INC.

G/F O.P.T. Bldg. 2, West Road,
Light Industry and Science Park of the Philippines I
Cabuyao, Laguna 4025 Philippines



CORPORATE HIGHLIGHTS

Company Name	MME TECHNOLOGIES, INC.
Start of Operation	October 21, 1999
Authorized Capital	Php 3 million
Mother Company	MINAMI CO., LTD.
President	Mr. Takehiko Murakami
Managing Director	Mr. Tetsuro Fujii
No. of Employees	155 (Dec. 2005)
Major Business	EMS <Electronics Manufacturing Services>
Production Capacity	60 Million components / month
Certified under ISO	ISO 9001 : 2000 <AJA Certified Nov. 2003>
SEIPI Membership	September 1, 2004



Quality policy

United in spirit, we continually strive to improve our Quality Management system in our pursuit to provide total customer satisfaction through just-in-time delivery of value-added Electronic Manufacturing Services, at reasonable cost in compliance to ISO 9001:2000 Standard.



January 2006

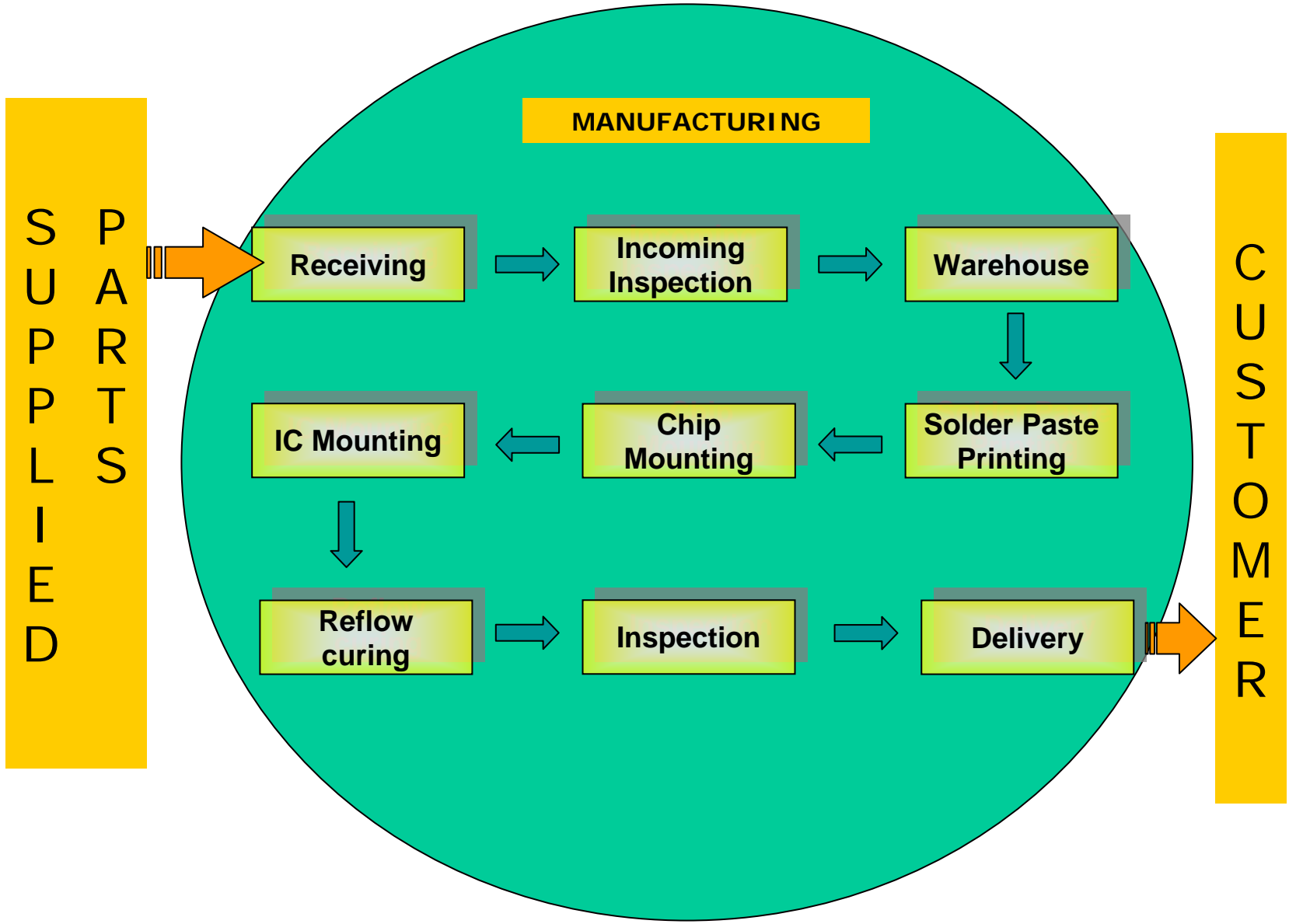


Work Ethics and Values

- 1. High quality goods and fast service every time.**
- 2. Complete in every detail.**
- 3. Proceed always with ambition and youthfulness.**
- 4. Enjoy the work and always brighten the working atmosphere.**
- 5. Keep an open mind toward all ideas and suggestion, respect sound theory and make the most effective use of time.**
- 6. Strive constantly for harmonious flow of work.**
- 7. Always treasure the spirit of the independent entrepreneur and deal with customer with humility and honesty.**



General Process Flow



January 2006



Illustrated Process Flow



Incoming Quality Inspection



Warehouse Kitting/Storage



Parts Issuance to Production



Inspection under Magnifiers



Traceability Sticker Attach



SMT Production



Auto Optical Inspection



Final Quality Inspection

Packing and Delivery



January 2006



Major Equipment List

MINAMI OWN BRAND TOP OF THE LINES SOLDER PRINTERS AND 2D CSP BALL PRINT INSPECTION MACHINE



MK 878SV Printer



MK 888SV Printer



MK 850SV Printer



**SOLDER 2D
INSPECTION FOR CSP**



**LATEST MK838
PRINTER WITH AIRBAG**



**LATEST MK 888
PRINTER WITH AIRBAG**



January 2006



Major Equipment List



YCM 8800



YCM 7000



YCM 7700



JUKI 750



I-PULSE M4



I-PULSE M2



I-PULSE M3



January 2006



8 Lead Free Ready SMT Lines



Casio Line 1



Casio Line 4



I-Pulse Line 7



Casio Line 2



Juki Line 5



I-Pulse Line 8



Casio Line 3



I-Pulse Line 6



January 2006



Customers List

Amkor Anam – LTI, Sta. Rosa, Laguna

Epson - LISP 1, Cabuyao, Laguna

Fujitsu Ten – LTI, Sta. Rosa, Laguna

Katolec - LTI, Biñan, Laguna

Kyouritsu - LISPII, Calamba, Laguna

Dallas Semiconductor – Maxim, Gateway Park, Cavite

Mitsumi – Sabang, Danao, Cebu

NEC / MAPLE - MEPZA, Cebu

Panasonic CCVE - LTI, Sta. Rosa, Laguna

Pricon Micro – Carmelray 1, Canlubang, Laguna

Seiyo - CEPZA, Cavite

Uniden - LISP 1, Cabuyao, Laguna



January 2006



Minami Printer's Wide Range of Applications:

**SMD Mounting : Flip Chip ,CSP, 0.3mm pitch QFP,
01005 Ultra-Small Chips Printing, Step-down
Ceramic Printing**

Other Applications

- **Dam and Fill**
- **Die Adhesive Printing on Populated Substrates
(Alternative for Dispensing)**
- **Double Solder Height Printing**
- **Chip Cap Mass Terminal Coating**
- **Wafer Bumping (6", 8", 12")**



Sample Products Assembled



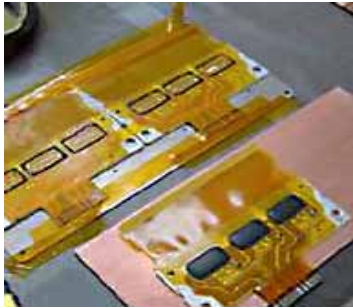
Car Tuner Board



Car Tuner Main Board



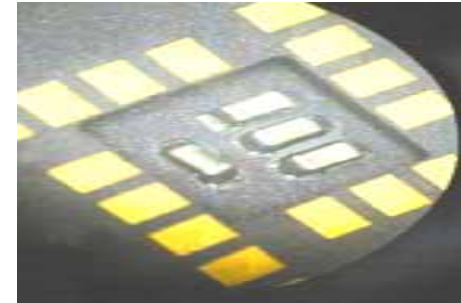
Flex PCB



Dam and Fill Printing



**Glue Printing on
Populated Substrates**



Ceramic Step-down Printing



Cellphone Memory Unit



2006 FUTURE PLANS

ISO 14001:2004 Certification : Target - September 2006

ISO / TS 16949:2002 Compliance : Target – July 2006

End



January 2006

